

KAMAMI

KAmoDBT-HC05



Rev. 20200922125114

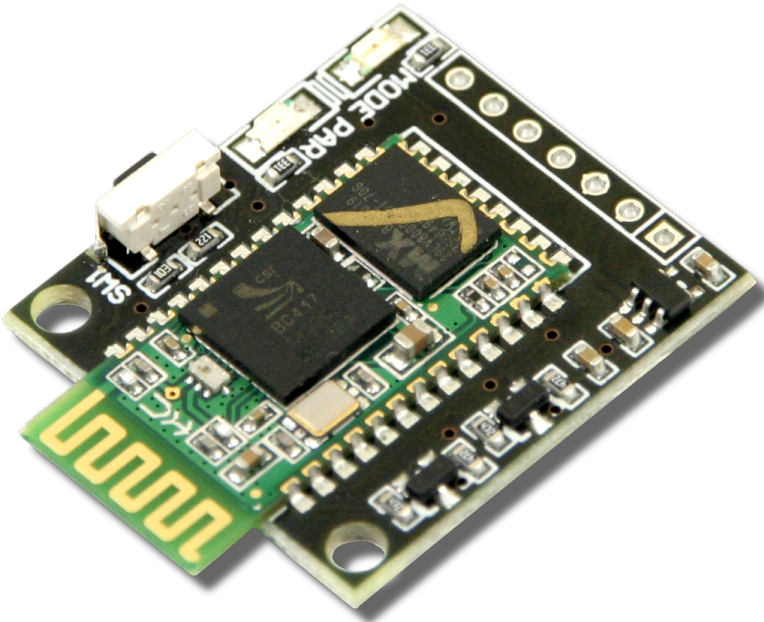
Źródło: <https://wiki.kamamilabs.com/index.php/KAmoDBT-HC05>

Spis treści

Basic features and parameters	1
Standard equipment	2
Electrical schematic	3
Output description	4
External links	7

Description

[KAmoBT-HC05](#) is a configurable (by using AT commands) Bluetooth module. Module has integrated LEDs, which signal work mode and connection state with device. Thanks to the small sizes and embedded translator of levels on Tx/D / Rx/D lines, module can be used in a lot of development projects.



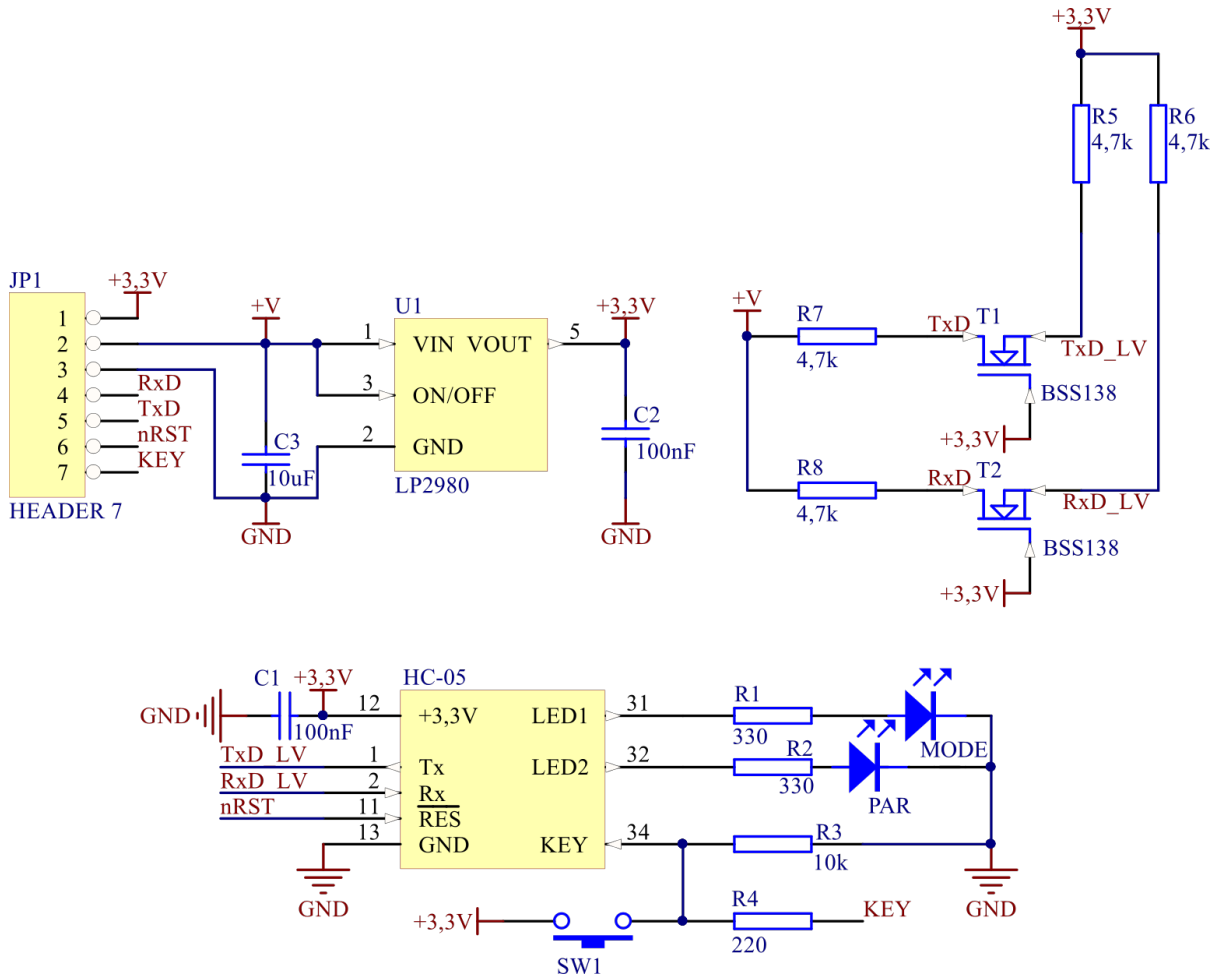
Basic features and parameters

- HC-05 module with integrated antenna, complies with Bluetooth v2.0 specification
- UART interface with programmable data transfer speed (baudrate)
- Typical receiver sensitivity: -80dBm
- Up to +4dBm RF transmit power
- Embedded voltage regulator
- Possibility of power supply with voltage in range: 2.1V...5.5V
- Embedded voltage level translator on UART lines (Tx/D, Rx/D)
- Embedded LED work mode (MODE) and pairing state (PAR)
- Embedded button (running configuration mode)
- KEY and nRST signals on connector
- Sizes: 34.2mm x 27mm x 5mm

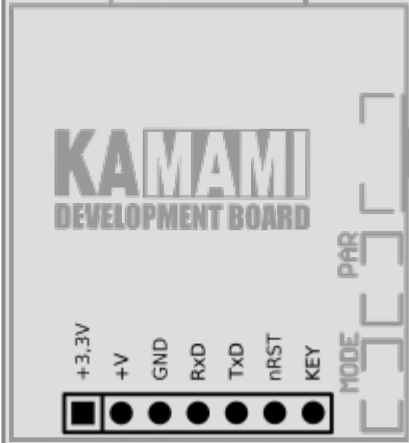
Standard equipment

Code	Description
KAmoBT-HC05	<ul style="list-style-type: none">• Assembled and launched module• Male pin connector (easy to soldering)

Electrical schematic

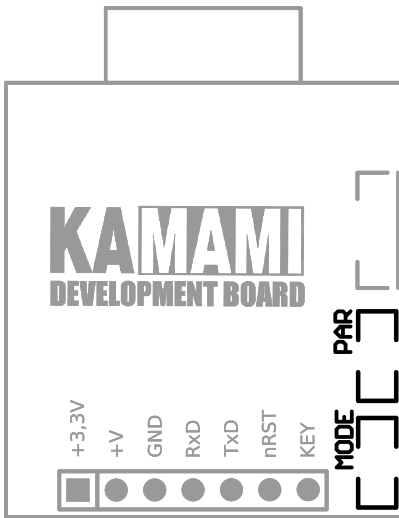


Output description

	JP1	Function
 <p>The diagram shows a header with seven pins. From left to right, they are labeled: +3,3V, +V, GND, RxD, TxD, nRST, and KEY. The +3,3V pin is a square, while the others are circles. To the right of the pins are two multi-pin headers labeled MODE and PAR.</p>	+3,3V	
	+V	Module power supply
	GND	
	RxD	Receiver UART line (with voltage level translator)
	TxD	Transmitter UART line (with voltage level translator)
	nRST	Device reset (enabled with low state)
	KEY	Button for changing work mode (maximum voltage on line: 3.6V)

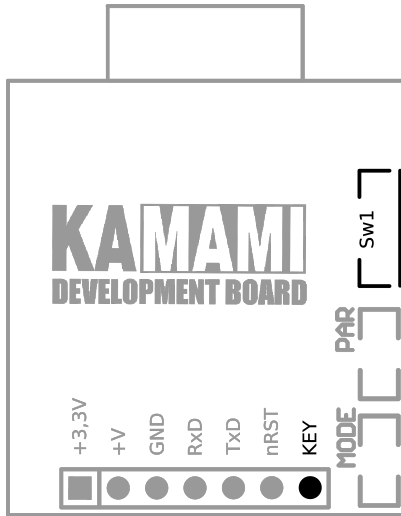
MODE and PAR LEDs

KAmoDBT-HC05 module was equipped with LEDs to signalling work mode and connection state with device. By default module settings, green MODE led signals visibility mode (blinking 5 times per second), configuration mode (blinking every 2s) and active mode (double blink every 2s). PAR LED (red) is ON, when communication with device is active.



Work mode button

KAmoDBT-HC05 module was equipped with button for changing work mode - short holding in power supply enabled moment (or by reset) allow to run configuration mode of module (with using AT commands). Parallel with button is connected also KEY line - setting on this line HIGH signal (maximum 3.6V) allow to control work mode from e.g. microcontroller level. This line is pulled down with resistor 10kΩ.



External links

- [HC-05 module datasheet](#)



Zastrzegamy prawo do wprowadzania zmian bez uprzedzenia.

Oferowane przez nas płytki drukowane mogą się różnić od prezentowanej w dokumentacji, przy czym zmianom nie ulegają jej właściwości użytkowe.

BTC Korporacja gwarantuje zgodność produktu ze specyfikacją.

BTC Korporacja nie ponosi odpowiedzialności za jakiegokolwiek szkody powstałe bezpośrednio lub pośrednio w wyniku użycia lub nieprawidłowego działania produktu.

BTC Korporacja zastrzega sobie prawo do modyfikacji niniejszej dokumentacji bez uprzedzenia.