

KAMAMI

ZL14PRG



Rev. 20200924092528

Źródło: <https://wiki.kamamilabs.com/index.php/ZL14PRG>

Spis treści

Introduction	1
Contents of package	2
JTAG interface	3
Software	4
ZLxARM evaluation boards configuration	5

Introduction

ZL14PRG interface (Macraigor-Wiggler compatible) lets you debugging and in-system programming built-in memory of ARM microcontrollers, that are equipped with JTAG interface. ZL14PRG works with royalty free evaluation and commercial versions of utility programs.



Contents of package

Code	Description
ZL14PRG	<ul style="list-style-type: none">• ZL14PRG interface• Ribbon cable terminated with two IDC20 plugs

JTAG interface

Many ARM microcontrollers and microprocessors are equipped with JTAG interface, that lets you setting breakpoints, single step program execution, data memory modification, On Chip Debugging etc. You can also use JTAG for programming microcontroller's memory (e.g. in Philips LPC2100 family). In compare with programming via RS232, programming with ZL14PRG is much faster, you can also monitor registers, memory and microcontrollers flags during its work. ZL14PRG is connected to PC via Centronics, and to controlled system via standard 20-pin connector (pin layout on Fig. 1). This connector is compatible with industrial standard for ARM microcontrollers (used in: ZL1ARM, ZL5ARM, ZL6ARM and similar boards). ZL14PRG is supplied from controlled system.

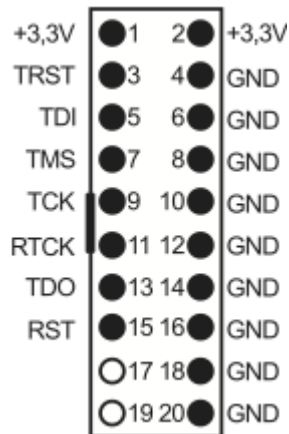


Fig. 1. Pin layout of ZL14PRG connector

New versions of OCD Commander work only with interfaces made by Macraigor firm.

Software

ZL14PRG was tested with:

- EWARM environment by IAR firm (www.iar.com).
- CrossStudio for ARM design environment (with C compiler) by Rowley firm (www.rowley.co.uk) - Fig. 2.
- Open OCD (<http://openocd.org/>).

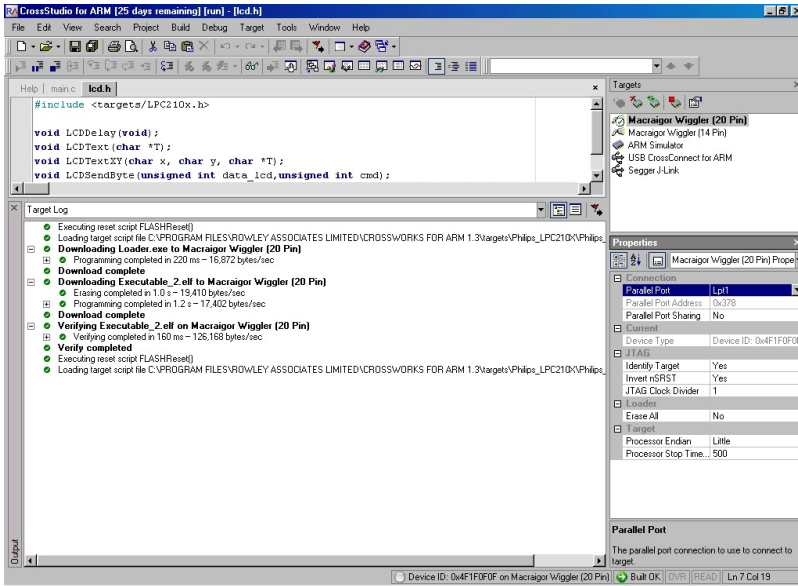


Fig. 2. CrossStudio for ARM

ZLxARM evaluation boards configuration

Evaluation boards for LPC2114/24 (ZL1ARM), LPC2119/29 (ZL5ARM) and LPC2131/32/38 (ZL6ARM) are compatible with ZL14PRG interface. Locations of JTAG connectors and configuration jumpers are described boards' manuals.

To turn on/off microcontroller JTAG interface, apart of setting proper jumper, you need to reset the microcontroller.



Zastrzegamy prawo do wprowadzania zmian bez uprzedzenia.

Oferowane przez nas płytki drukowane mogą się różnić od prezentowanej w dokumentacji, przy czym zmianom nie ulegają jej właściwości użytkowe.

BTC Korporacja gwarantuje zgodność produktu ze specyfikacją.

BTC Korporacja nie ponosi odpowiedzialności za jakiegokolwiek szkody powstałe bezpośrednio lub pośrednio w wyniku użycia lub nieprawidłowego działania produktu.

BTC Korporacja zastrzega sobie prawo do modyfikacji niniejszej dokumentacji bez uprzedzenia.